

**Drawing Status**  
**TENDER**

This drawing is © C4 Projects and is not to be copied, reproduced or re-distributed either in whole or in part without the prior written permission of the originator.

The originator shall have no responsibility for any liability, loss, cost, damage or expense arising from or relating to any use of this document other than for its intended purpose on this project.

This drawing shall be read in conjunction with all other relevant drawings, specifications and associated documentation. Any discrepancies, errors or omissions are to be reported to the originator before proceeding with work.

All dimensions are to be checked on site by the contractor prior to proceeding with any work. This drawing shall not be scaled to ascertain any dimensions, work to figured dimensions only.

**DISCLAIMER**  
When the drawing is issued in CAD, it is an uncontrolled version issued for information only, to enable the recipient to prepare their own documents/drawings for which they are solely responsible.

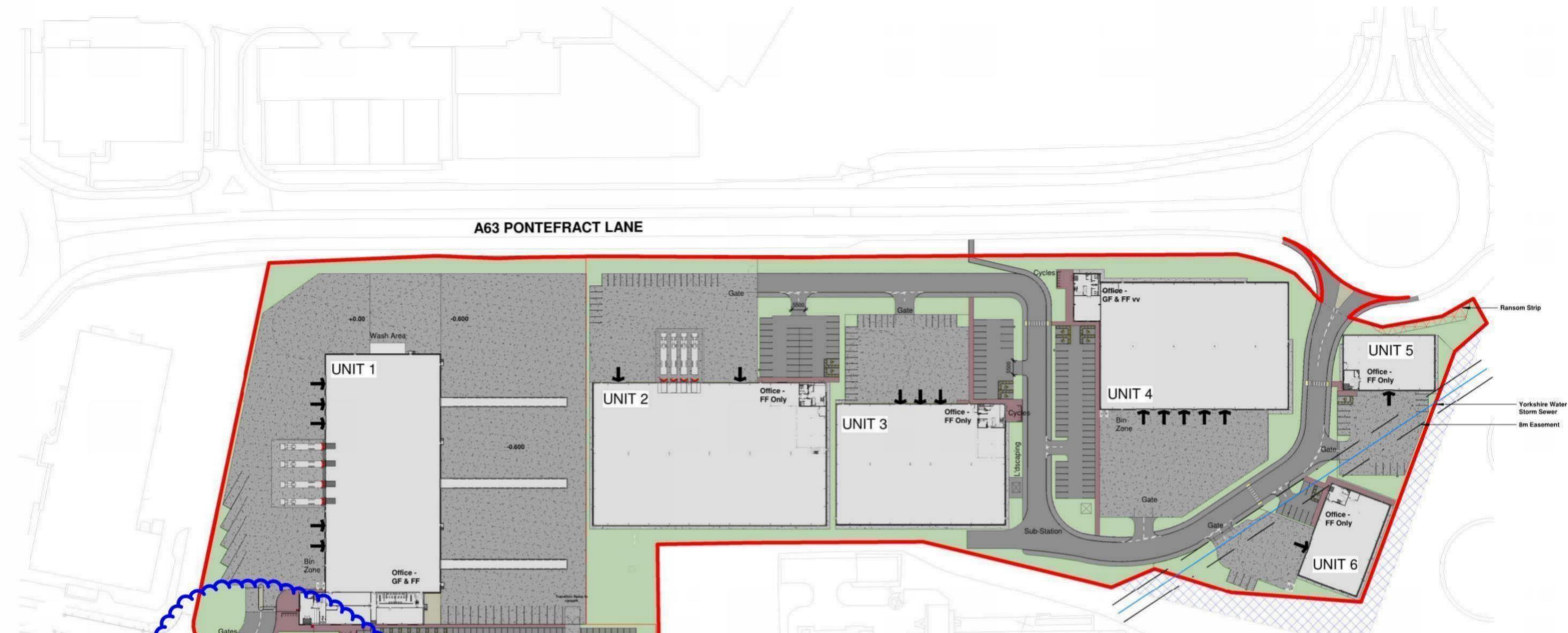
**SOFTWARE INTEROPERABILITY**  
C4 Projects prepared this drawing using Autodesk REVIT Architecture.

C4 Projects does not accept liability for any loss or degradation of any information held in the drawing resulting from the translation from the original file format to any other file format or from the recipient's reading of it in any other programme.

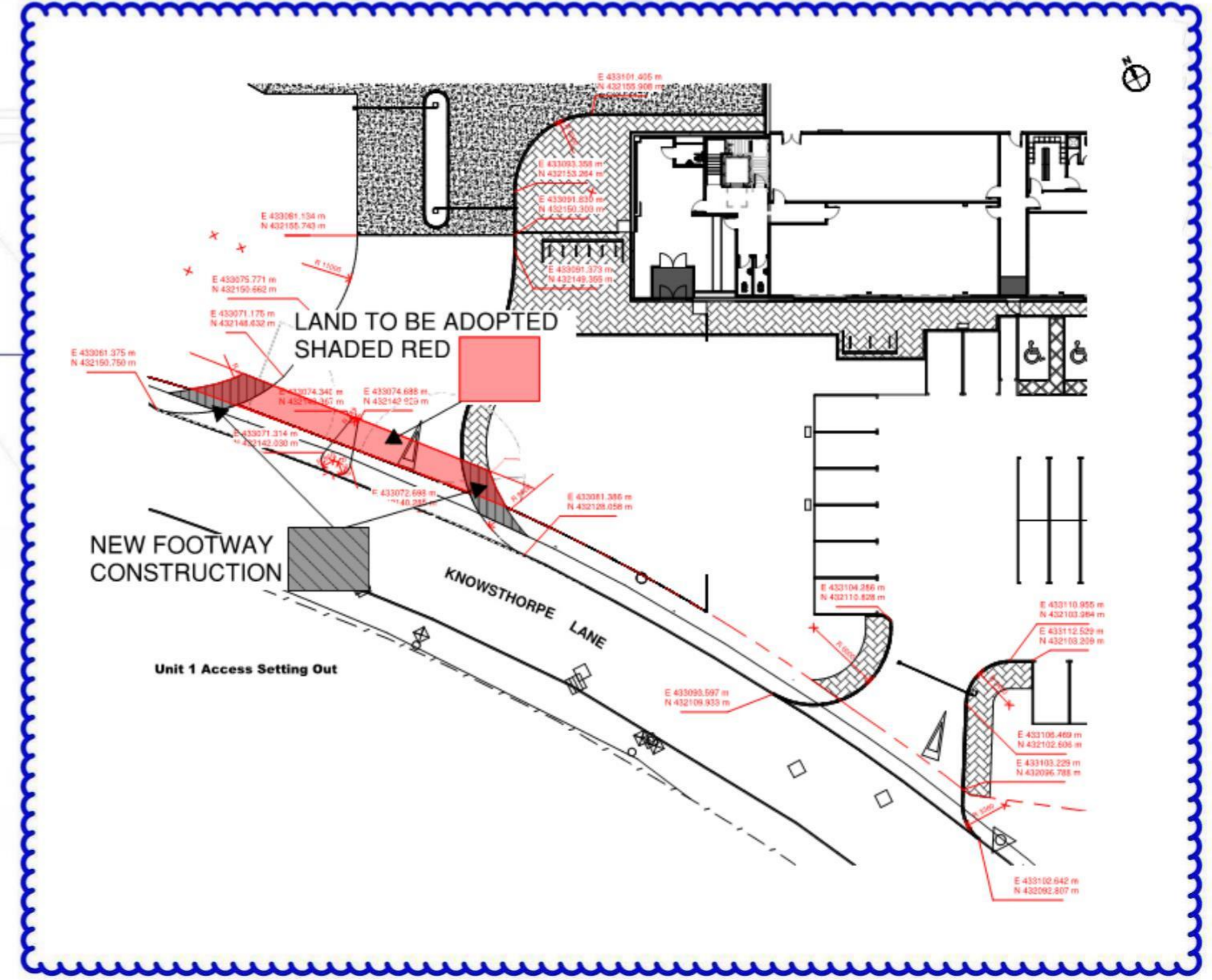
Hazard Identification		
ref	hazard	date

Site Area		
Name	Area	Area (Acres)
Site Area	66,026.00 m <sup>2</sup>	16.32 acres
Grand total: 1	66,026.00 m <sup>2</sup>	16.32 acres

Area Schedule			
ze	Ground Floor GIA Imperial	Office Space	Unit Total GIA Imperial
Unit 1	51,059 ft <sup>2</sup>	6,324 ft <sup>2</sup>	57,383 ft <sup>2</sup>
Unit 2	54,919 ft <sup>2</sup>	4,013 ft <sup>2</sup>	58,933 ft <sup>2</sup>
Unit 3	33,476 ft <sup>2</sup>	2,359 ft <sup>2</sup>	35,835 ft <sup>2</sup>
Unit 4	39,427 ft <sup>2</sup>	4,138 ft <sup>2</sup>	43,565 ft <sup>2</sup>
Unit 5	8,279 ft <sup>2</sup>	926 ft <sup>2</sup>	9,206 ft <sup>2</sup>
Unit 6	9,972 ft <sup>2</sup>	926 ft <sup>2</sup>	10,898 ft <sup>2</sup>
Grand total: 23	197,134 ft <sup>2</sup>	18,688 ft <sup>2</sup>	215,822 ft <sup>2</sup>



Site Plan Proposed



- V Additional access to Unit 1 added NJA 27.09.19
- U Sub-station position finalised and endorsed NJA 20.08.19
- T Planners comments endorsed NJA 05.08.19
- S Planners comments endorsed NJA 08.07.19 DC
- R Additional LA Door to Unit 1 and surveyed manholes added NJA 16.05.19 DC
- Q Road width adjusted to north units 2 & 3 NJA 08.05.19 DC
- P Site revised to suit new unit areas and locations to avoid storm sewer diversion NJA 01.05.19 DC
- O Unit 4 service yard increased to 42m NJA 11.04.19 DC
- N Revised to new layout following Client confirmation NJA 10.04.19 DC
- M Boundary fencing adjusted to new layout NJA Date 24 DC
- L Unit size to DHL requirements NJA 28.03.19 DC
- K Unit 1 door positions amended to suit elevations NJA 27.03.19 NR
- J Unit 1 reconfigured including access, car parking and yard NJA 14.03.19 DC
- I Issued to Planner following comments relating to RM Application Phase 1 NJA 05.03.19 DC
- H Site Access revised and access to Units 5 & 6 amended NJA 14.02.19 DC
- G Unit 1 Docks & Level Access amended to suit occupier comments NJA 04.02.19 DC
- F Issued for TENDER NJA 21.12.18 DC
- E Unit 3 & 4 Units adjusted following radar scan results NJA 20.12.18 DC
- D DHL Unit revised & updated. Yard altered to facilitate requirements RJ 07.12.18 DC
- C Concrete service yard to Unit 1 extended NJA 10.10.18 DH
- B Minor Amendments NJA 03.10.18
- A First Issue of Drawing RJ 18.09.18

**C4 Projects**  
Quayside, Waterfoot Business Park, Stockton Heath, WARRINGTON, CH11 1JG  
t: 01825 751 852 e: info@c4projects.co.uk www.c4projects.co.uk

Project Management • Architecture • Building Surveying • Cost Consultancy

Client  
Total Developments (NW) Ltd

Project  
Knostrop Industrial Estate  
Pontefract Lane, Leeds

Drawing Title  
Site Plan as Proposed

Status Purpose of Issue  
S2 SUITABLE FOR INFORMATION

Drawn by RJ Created Aug 18  
C4 Job no. 18024 Scale 1:1000 @ A1

Dwg no. 18024-C4C-BB-ZZ-DR-A-0501 Rev X